



INTERNATIONAL ETHELLES CLASS
2020 British Open and National Championship
Friday 25 – Sunday 27 September 2020



The organising authority is the Royal London Yacht Club (RLYC)
in conjunction with the Cowes Etchells Fleet

REGATTA OFFICIALS

Class Captain:	David Franks
Event Organiser:	Royal London Yacht Club
Race Officer:	Peter Taylor
Protest Committee Chairman:	Penny Carter



INTERNATIONAL ETHELLS CLASS

2020 British Open and National Championship

Friday 25 – Sunday 27 September 2020



SAILING INSTRUCTIONS

The Cowes Etchells Fleet in conjunction with the Royal London Yacht Club invites entries to the 2020 British Open and National Championship to be sailed at Cowes, United Kingdom, on Friday 25, Saturday 26 and Sunday 27 September 2020.

The Regatta Venue is at Cowes Yacht Haven (CYH) Cowes.
The Regatta Office is at the Royal London Yacht Club (RLYC), The Parade, Cowes.

The organising authority (OA) is the Royal London Yacht Club in conjunction with the Cowes Etchells Fleet.

1. RULES

- 1.1 The regatta will be governed by
 - (a) the 'rules' as defined in the Racing Rules of Sailing 2017-2020 (RRS)
 - (b) the International Etchells Class rules
 - (c) the byelaws for the Port of Southampton, Portsmouth Harbour and Cowes Harbour. See also Appendices 2, 3 and 4.
- 1.2 Covid-19: All crews are required to adhere to the latest Covid-19 guidance from NHS England and the UK Government.
- 1.3 Covid-19: all crews are also required to observe and follow the latest [RYA Guidance on sailing and racing with participants from different households during COVID-19 in England.](#)
- 1.4 Covid-19: In addition, to enter, the skipper of each boat shall complete and submit an 'Event Personal Declaration' in the 24 hours immediately prior to the event and return it to the Regatta Office at RLYC or by email to sailing@rlyc.org.uk . This form will be available on the Yacht Scoring Website. Competitors who answer 'False' to any of the questions shall not take part in the event. **WITHOUT EXCEPTION, FAILURE TO COMPLY WITH THIS REQUIREMENT WILL RESULT IN BOATS BEING SCORED DNC.**
- 1.5 In the event of conflict between the notice of race and these sailing instructions, these sailing instructions shall prevail. This changes rule 63.7.

2 NOTICES TO COMPETITORS

- 2.1 Notices to competitors will be promulgated either by posting on the [Yachtscoring Official Notice Board](#) , on the [RLYC website](#) , by posting on the Etchells WhatsApp group or by broadcast on the designated VHF channel (See SI 2.2 below), or by any combination of these methods.
- 2.2 VHF channel 77, or the channel designated at the briefing, will be used for radio communication. See SIs 6.1, 8.2, 9.2, 9.3, 11.3, 18.4, 23.2, 23.5, 26.1 and 26.2.

3 CHANGES TO SAILING INSTRUCTIONS

- 3.1 Any change to the sailing instructions will be posted before 0900 on the day it will take effect, except that any change to the schedule of races will be posted by 2000 on the day before it will take effect.

4 SIGNALS MADE ASHORE

- 4.1 Signals made ashore will be displayed at the Royal London Yacht Club flagstaff.
4.2 When flag AP is displayed ashore, '1 minute' is replaced with 'not less than 45 minutes' in race signal AP. This changes RRS Race Signals.

5 REGISTRATION

- 5.1 Crew weigh-in and Sail Nomination as detailed in Amendment No. 1 to the Notice of Race are required to be completed by 0900 on Friday 25 September.

6 SCHEDULE OF RACES

- 6.1 Racing and associated events are scheduled as follows:

Date	HW *	Time	Event	Location
Thursday 24 Sept		1730 - 1900	Registration: Weigh-in and Sail Nomination	CYH
Friday 25 Sept	1903 4.0m	0800 - 0900 0915 1125	Registration: Weigh-in and Sail Nomination Skippers Briefing - by VHF radio & WhatsApp First warning signal	CYH VHF & WhatsApp Central Solent
Saturday 26 Sept	0754 3.9m	1025	First warning signal	Central Solent
Sunday 27 Sept	0927 4.0m	1025 After racing	First warning signal Prize-giving, held under social distancing rules: 1 st , 2 nd and 3 rd placed boats only, plus 1 st Corinthian and 1 st Youth boats	Central Solent CYH

* all HW times refer to HW Portsmouth and are BST

- 6.2 Seven races are scheduled. It is the intention of the race committee to run two races on Friday and Sunday, and three races on Saturday. No more than three races may be sailed on any race day.
6.3 When more than one race will be held on the same day, the warning signal for each succeeding race will be made as soon as practicable. To alert boats that another race will begin soon, AP will be displayed at the finish of the previous race.
6.4 On the last scheduled day of racing, no warning signal will be made after 1500 unless a postponement or general recall has been signaled during or as part of that starting sequence.

7 CLASS FLAG

- 7.1 The class flag will be the Etchells class insignia on a white background or IC Flag E.

8 RACING AREA

- 8.1 Racing will take place in the Central Solent including the Bramble Bank.
8.2 The race committee will broadcast each day from around 0930 (1000 on Friday 25 September)

on the designated VHF channel the two-digit code of a fixed mark near to the intended starting area (See Appendix 4).

9 THE COURSE

- 9.1 The diagrams in Appendix 1 show the course configuration, including the order in which marks are to be passed, and the side on which each mark is to be left. The courses to be sailed are shown above each diagram. The length of the windward legs will be up to approximately 2 nm.
- 9.2 The course to be sailed for each race will be signalled from the committee vessel, either visually by displaying the single course identifying number (Appendix 1 entitled 'Laid Courses'), or alternatively, or in addition, by broadcast on the designated VHF channel no later than the warning signal.
- 9.3 The race committee vessel may display and/or broadcast the approximate compass bearing and distance from the starting line to mark 1.

10 MARKS

- 10.1 Marks 1, 2, 3P and 3S will be red inflatable rectangular, or as described at the briefing.
- 10.2 New marks, as provided in SI 12.1, will be black inflatable, either rectangular or triangular.
- 10.3 The race committee may lay an inner distance mark on or just in the pre-start area at the committee vessel end of the starting line. While racing, boats shall not pass between this mark and the nearby committee vessel.

11 THE START

- 11.1 The starting line is between the staff displaying an orange flag on the committee vessel at the starboard end of the line and the course side of an orange inflatable mark at the port end of the line.
- 11.2 A boat starting later than 10 minutes after the starting signal will be scored DNS. This changes rules 63.1, A4.1 and A.5.
- 11.3 The race committee will attempt to broadcast OCS, UFD and BFD boats using the sail numbers on the designated VHF channel. Failure of equipment, failure to hear or any delay to broadcast or the order of the sail numbers broadcast shall not be grounds for redress. This changes rule 62.1(a).
- 11.4 A race committee boat stationed near mark 1 may display the sail numbers of boats that have violated rule 30.2, 30.3 or 30.4. Other race committee boats may also be used on the first windward leg for such display or hail. Boats identified under this instruction shall promptly leave the race course and not interfere with boats still racing.

12 CHANGE OF THE NEXT LEG OF THE COURSE

- 12.1 To change the next leg of the course, the race committee will lay a new mark (or move the finishing line) and remove the original mark as soon as practicable. When in a subsequent change a new mark is replaced, it will be replaced by an original mark. The change will be signaled before the leading boat has begun the leg, although the mark (or finishing line) may not yet be in the new position.
- 12.2 The position of any laid inflatable mark(s) may be adjusted by up to plus or minus 10 degrees and up to approximately 400 metres to windward or leeward, relative to the previous position, without signaling code flag C nor '+' nor '-'. This changes rule 33.

13 THE FINISH

- 13.1 The finishing line will be between the staff displaying an orange flag on the committee vessel and a laid inflatable mark at the other end of the line. The requirement in S.I. 10.3 shall apply at the finishing line when such inner distance mark is laid.
- 13.2 The race committee may shorten the line to a more appropriate length for the finish.

14 PENALTY SYSTEM

- 14.1 The first two sentences of RRS 44.1 are changed to:- A boat may take a One-Turn Penalty when she may have broken one or more rules of Part 2 or RRS 31 in an incident while racing. However, when she may have broken one or more rules of Part 2 while in the zone around a mark other than a starting mark, her penalty shall be a Two-turns Penalty.

15 TIME LIMITS

- 15.1 The time limit will be 90 minutes from the starting signal.
- 15.2 Boats failing to finish within 10 minutes after the first boat sails the course and finishes will be scored DNF. This changes rules 35, A4.2 and A5.

16 PROTESTS AND REQUESTS FOR REDRESS

- 16.1 Protest forms are available at the RLYC. Protests shall be delivered there within 90 minutes of the last boat to finish the last race of the day. This time will be posted on the [Yachtscoring Official Notice Board](#) or on the Etchells WhatsApp group. This changes rules 61.3 and 62.2.
- 16.2 Notices will be posted within 30 minutes of the protest time limit to inform competitors of hearings in which they are parties or named as witnesses. Hearings will be held at the Royal London Yacht Club as soon as possible after protest time ends.
- 16.3 Notices of protests by the race committee or the protest committee will be posted within the protest time limit on the [Yachtscoring Official Notice Board](#) or on the Etchells WhatsApp group to inform boats under rule 61.1(b).
- 16.4 Prior to a hearing and with the permission of the protest committee, a boat that has broken a rule of Part 2 of the RRS and has not complied with the requirements of rules 31 or 44.1, may accept a 30% place penalty, calculated on the number of boats entered rounded to the nearest whole number (rounding 0.5 upwards), except that she shall not be scored worse than DNF.
- 16.5 For infringements of the rules other than Part 2 and rule 31, the protest committee may award a lesser penalty than DSQ.
- 16.6 For the purpose of rule 64.3(b) the 'authority responsible' is the class international governing committee.
- 16.7 Breaches of SIs 18, 19, 23, 24 and 25 and rule 55 will not be grounds for protest by a boat. This changes rule 60.1(a). Penalties for these breaches may be less than disqualification if the protest committee so decides.
- 16.8 On the last day of the regatta:
 - 16.8.1 a request for reopening a hearing shall be delivered within the protest time limit if the party requesting reopening was informed of the decision on the previous day;
 - 16.8.2 a request for reopening a hearing held on the last day shall be delivered no later than 30 minutes after the party requesting reopening was informed of the decision on that day;
 - 16.8.3 the time limit to request redress based upon an action or omission of the race committee or protest committee shall be 30 minutes after the final results are posted. This changes rules 62 and 66.

17 SCORING

17.1 Four races are required to be completed to constitute a series.

17.2 Discards:

17.2.1 When four races have been completed a boat's series score will be the total of her race scores.

17.2.2 When five or more races have been completed, a boat's series score will be the total of her race scores excluding her worst score.

18 SAFETY REGULATIONS

18.1 When leaving and entering Cowes Harbour boats shall not sail through the moorings unless safety dictates. (See Appendix 2).

18.2 Boats shall comply with Associated British ports Notice to Mariners No 14 of 2019. The 'Moving Prohibited Zone' in the Precautionary Area (see Appendix 3) shall rank as an obstruction for the purposes of RRS 19 & 20. Boats shall avoid close quarters with any commercial vessel. Particular concern should be taken when sailing in the Area of Concern.

18.2 Boats shall keep a good look out for ferries and commercial traffic, especially in the Area of Concern shown on the Central Solent Racing Chart in Appendix 4 and give way to all such vessels.

18.3 All boats shall sail on starboard tack close to the stern of the committee vessel and hail their sail number prior to the start of the first race each day.

18.4 A boat that retires from a race shall notify the race committee as soon as possible on the designated VHF channel or by hailing an official regatta support boat/rib.

18.5 All boats while racing shall pass to the north of Cowes breakwater.

19 REPLACEMENT OF CREW OR EQUIPMENT

19.1 Substitution of crew will not be allowed without prior written approval of the protest committee, and such requests shall be submitted to the race committee for verification of eligibility and crew weight of the substitute crew.

19.2 After measurement until completion of racing, no boat, sail or any item of measured equipment shall leave the venue without being posted on the official equipment sign-out sheet on the official notice board. It is the sole responsibility of each skipper to ensure proper recording.

19.3 After measurement until completion of racing, no sail shall be recut or altered. Repairs to sails pursuant to all applicable rules are permissible only upon written approval of the protest committee. All such sails may be subject to re-measurement on completion of repairs.

20 EQUIPMENT AND MEASUREMENT CHECKS

20.1 A boat or equipment may be inspected at any time for compliance with the class rules and sailing instructions which may include rule 43 and class rules C.2.2 and C.3.2.

20.2 On the water, a boat can be instructed by the race committee or the protest committee to proceed immediately to a designated area for inspection.

21 CREW WEIGHING

21.1 Each skipper and crew member of each boat shall be weighed together prior to racing. Weigh-in will take place between 1730 and 1900 on Thursday 24 September and between 0800 and 0900 on Friday 25 September 2020 at Cowes Yacht Haven.

21.2 The total combined weight of crew members for each boat will be posted on the [Yachtscoring](#)

[Official Notice Board](#). Crews that fail to be weighed by the designated time or fail to make the weight limit (two hundred and eighty-five (285) kilos) by the designated time shall be scored DNS for all subsequent races until such time as they comply with Class Rule C.2.2. The race committee may approve an extension of time in extenuating circumstances, and such requests are to be submitted to the race committee.

21.3 Crew substitutions shall not be permitted for the purpose making the weight limit.

21.4 Weighing scales will be available on each race day at CYH from 0830 to 0930 and from 1700 to 1800.

22 OFFICIAL BOATS

22.1 Race committee boats will display 'RC' flags.

23 COACH AND SUPPORT BOATS

23.1 Coach and support boats must be registered with the organising authority prior to acting as a coach or support boat and shall provide their own their national sail letters to display on the engine cover at all times while they are acting as a coach or support boat.

23.2 All registered coach and support boats will carry on board and operate while on the water a VHF radio capable of transmitting and receiving on the designated regatta VHF channel and agree to assist the race committee if directed to do so.

23.3 Competitors shall have no communication with, and boats shall not be tied to, coach or support boats from the first warning signal (or any other time the organising authority considers appropriate) of the day until racing has been concluded for the day. Between races, coach and support boats shall not approach, communicate with or transfer provisions or equipment to or from their supported boats unless in a medical or emergency threatening the health of the crew or the flotation of the boat and only with the expressed permission of the protest committee or the race committee.

23.4 Registered coach and support boats and their personnel shall stay at least 100 metres below the starting line and its extensions from the time of the preparatory signal until five minutes after the start of any race. After this time, coach and support boats may then proceed parallel to the course on the starboard side of the course facing the wind at a distance of at least 100 metres outside areas where boats are racing. Coach and support boats shall not go above the weather marks or below the leeward marks at any other time while boats are racing.

23.5 Coach and support boats shall, when requested by the race committee, tow or assist boats not associated with them. Coach and support boats are to monitor the designated regatta VHF channel and shall follow all instructions from the race committee.

23.6 Any breach of SIs 23.1, 23.2, 23.3, 23.4 or 23.5 by a coach or support boat may result in a penalty being applied to any or all boats serviced by that coach or support boat. The penalty may be disqualification or some other penalty as determined by the protest committee.

24 HAUL-OUT RESTRICTIONS

24.1 All boats shall be afloat before 0900 on Friday 25 September and shall not be hauled out during the championship except with and according to the terms of prior written permission of the protest committee. The penalty may be DSQ for any subsequent races.

25 PLASTIC POOLS AND BREATHING APPARATUS

25.1 Plastic pools or their equivalent shall not be used around competing yachts between the close

of registration and the end of the championship.

- 25.2 The use of breathing apparatus, including snorkels, is not allowed from 0900 on Friday 25 September until after the last race of the regatta. Any swimmer must be accompanied by a watcher close by.

26 RADIO COMMUNICATION

- 26.1 This supplements but does not change rules 2 and 41 for the IECA. All boats must carry a marine band VHF receiver capable of receiving normal international channels. Boats shall use the radio to report retirement from racing and may use the radio to request assistance in an emergency. No other transmissions are permitted by competing yachts during each racing day from the first warning signal until the end of the last race of the day.
- 26.2 The race committee may use the designated VHF channel to provide competitors with race information.
- 26.3 The use of mobile/cell phones or any device capable of sending and/or receiving external electronic communication and/or connecting to the internet is prohibited after the first warning signal (or any other time considered appropriate by the organising authority) on each race day until the boat has completed its days racing, except as provided in SI 26.1 or in an emergency threatening the safety of any member of the crew or the flotation of the boat or otherwise with the express permission of the protest committee or the race committee.

27 WAIVER OF LIABILITY

- 27.1 Competitors participate in the regatta entirely at their own risk. See rule 4 Decision to Race and NoR 17. The organising authority will not accept any liability for material damage, personal injury or any fatality sustained in conjunction with or prior to, during or after the championship.
- 27.2 All boats competing are required to carry valid third party insurance with a minimum cover of GBP 3 million per incident or the equivalent.

28. PRIZEGIVING

- 28.1 Prizegiving will take place immediately after boats come ashore on Sunday 27 September at Cowes Yacht Haven.
- 28.2 The prizegiving will be for the boats placed 1st, 2nd and 3rd overall, plus the 1st Corinthian boat and the 1st Youth boat. The prizegiving will be conducted under social distancing rules.

29. RISK STATEMENT

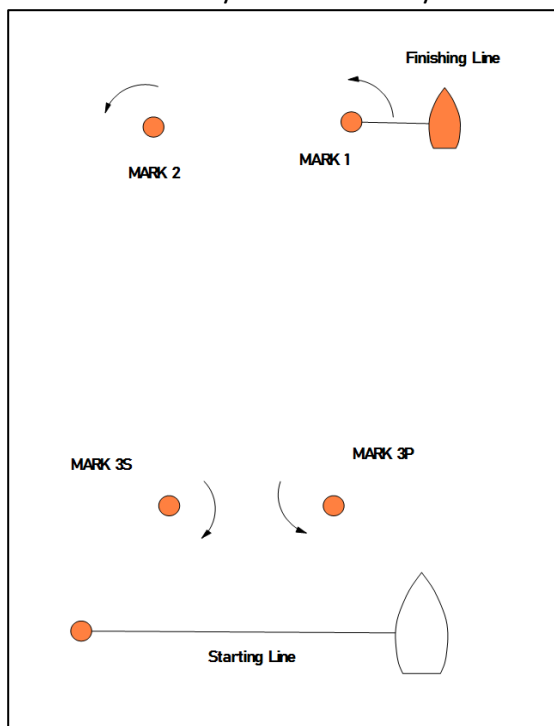
- 29.1 Rule 4 of the Racing Rules of Sailing states: 'The responsibility for a boat's decision to participate in a race or to continue racing is hers alone.' Sailing is by its nature an unpredictable sport and therefore involves an element of risk. By taking part in the event, each competitor agrees and acknowledges that:
- a) They are aware of the inherent element of risk involved in the sport and accept responsibility for the exposure of themselves, their crew and their boat to such inherent risk whilst taking part;
 - b) They are responsible for the safety of themselves, their crew, their boat and their other property whether afloat or ashore;
 - c) They accept responsibility for any injury damage or loss to the extent caused by their own actions or omissions;

- d) Their boat is in good order, equipped to sail in the event and they are fit to participate;
- e) The provision of a race management team, patrol boats, umpires and other officials and volunteers by the organiser does not relieve them of their own responsibilities;
- f) The provision of patrol boat cover is limited to such assistance, particularly in extreme weather conditions, as can be practically provided in the circumstances.

Appendix 1 - Courses

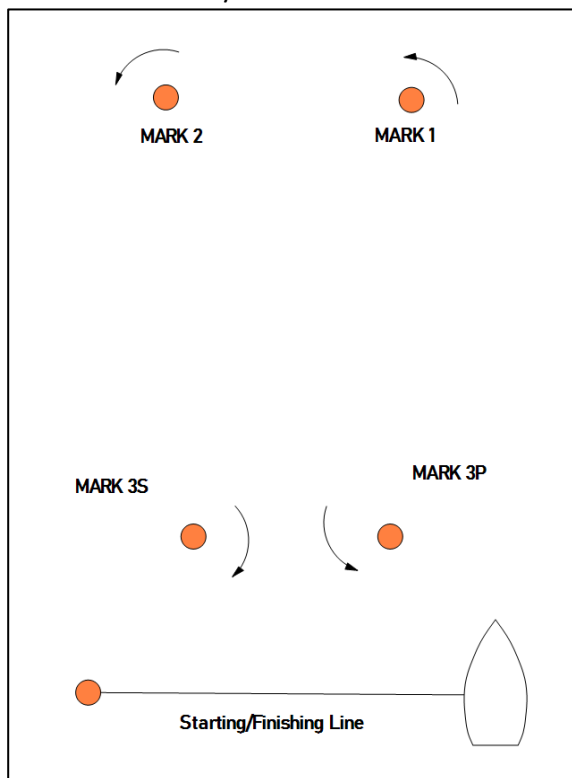
Course 1

Start – 1 – 2 – 3P/3S – 1 – 2 – 3P/3S – Finish



Course 2

Start – 1 – 2 – 3P/3S – 1 – 2 – Finish

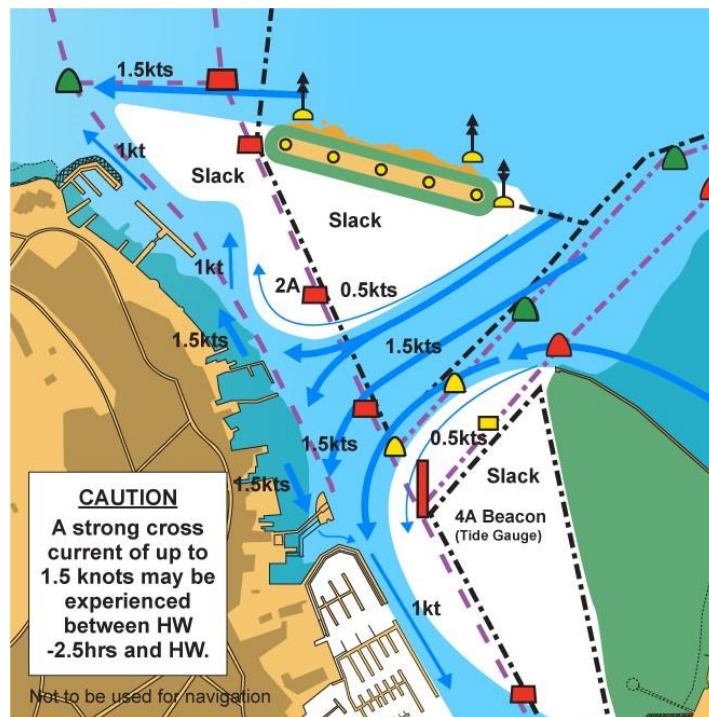
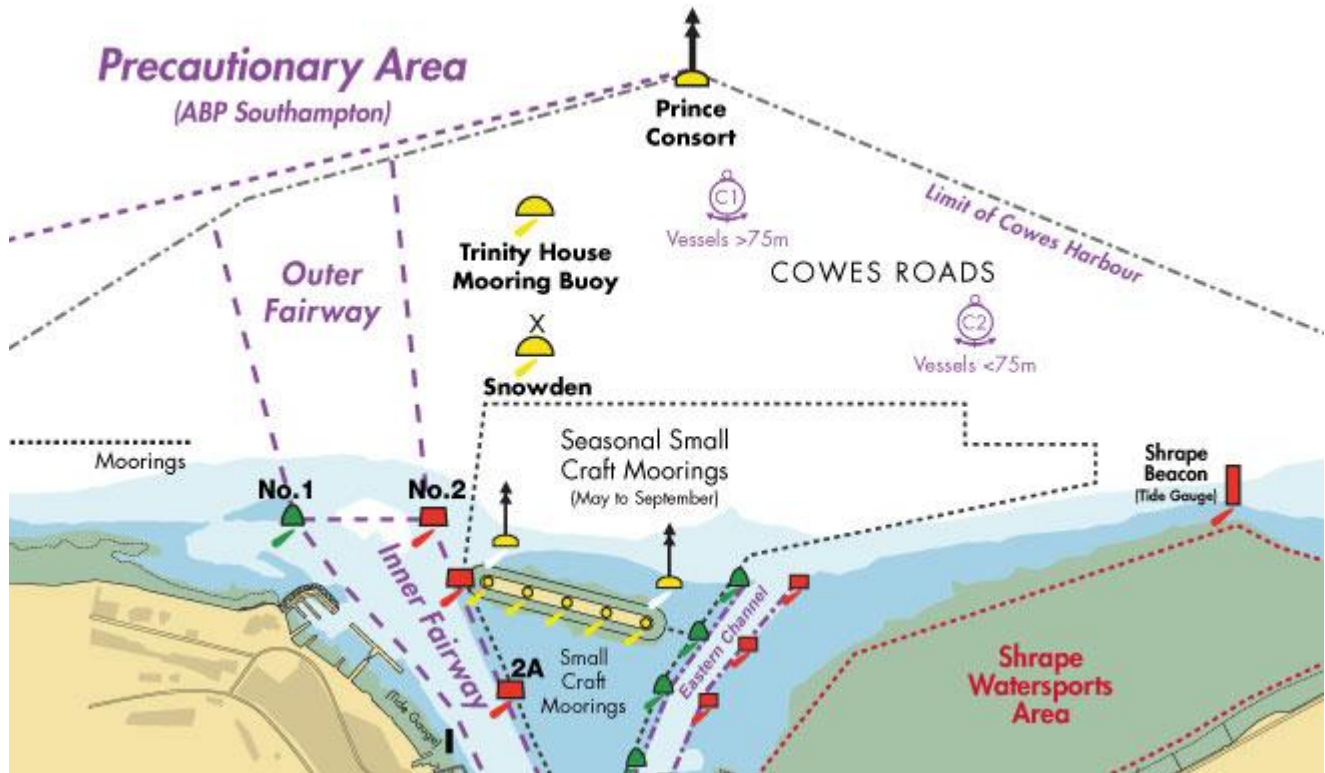


Appendix 2

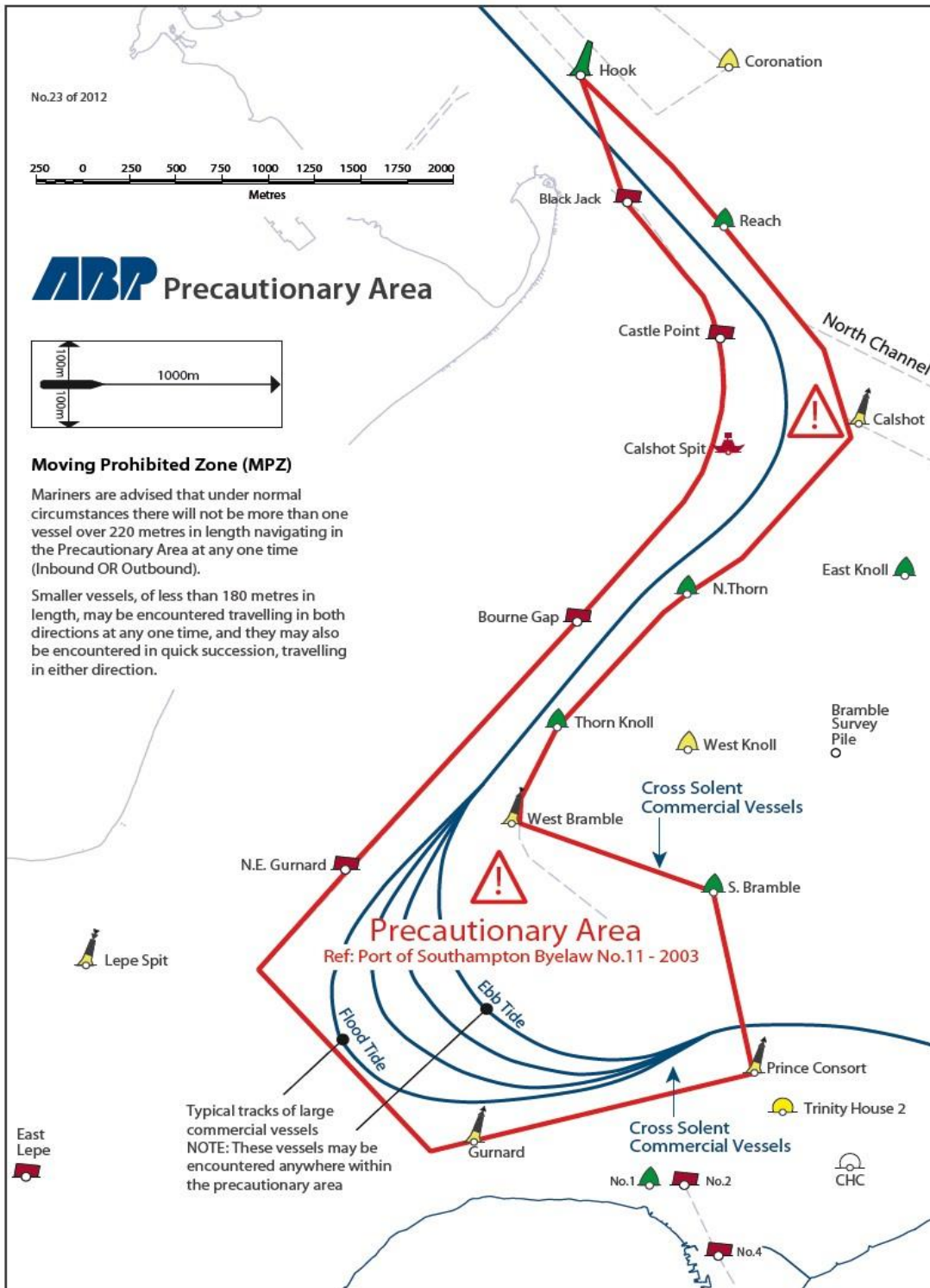
Cowes Harbour chart

Cowes Harbour Breakwater and Harbour Tidal Flows

Dayboats are advised to exit/enter the harbour via the small craft channel when possible



Appendix 3



Appendix 4 – two-digit identifiers

Central Solent Course Mark Two Digit Identifiers 2020

3A West Lepe	3Z Trinity House Buoy	4U TeamO Marine
3B NGR	30 RORC	4V Hamble Yacht Services
3C craftinsure.com	31 South Bramble	4W Goodall Roofing
3D Salt Mead	33 Prince Consort	4X Colette
3E YachtDataBank	34 Cowes Corinthian	4Y North Ryde Middle
3F Elephant Boatyard	39 Snowden	4Z South Ryde Middle
3G Sevenstar Yacht Transport	4C Chilling	40 Fastnet Insurance
3H East Lepe	4E Jane	41 East Bramble
3K Lepe Spit	4F Deloitte Sailing Club	42 Peel Bank
3L Gurnard Ledge	4H East Knoll	43 Velociwrap Graphics
3N Stansore	4J hamblewinterseries.com	44 Royal Yacht Squadron
3P Cowes Yacht Haven	4K Royal London YC	45 South East Ryde Middle
3Q East Bay	4L William	46 North East Ryde Middle
3R North East Gurnard	4M Hill Head	47 Maraval
3S Royal Thames	4N QXI International	5A Liam
3T CHS	4P West Ryde Middle	5B Mother Bank
3U Gurnard	4Q John Fisher	5C Browndown
3W Williams Shipping	4R Darling Buoy	5D Kemp Quay
3X Battleflag.co.uk	4S Royal Southern	82 No 2 Cowes Harbour Buoy #
3Y West Knoll	4T Norris #	91 RYS ODM Finishing Mark

May only be used as passing marks. *Not for rounding.*

